

# Eyewear Catalogue



# Contents

## Spectacles

7.1	- Fit-Logic	Pulsafe
7.2	- Nemesis	Jackson Safety
7.3	- Metalite	Pulsafe
	- A800	Pulsafe
7.4	- Protege	Pulsafe
	- Op-Tema	Pulsafe
7.5	- Element	Jackson Safety
	- Coloured Safety	Futuris
7.6	- Classic	3M
	- Comfort	3M

## Over-Specs

7.7	- Overspex	Futuris
-----	------------	---------

## Goggles

7.7	- Safety Goggle	3M
7.8	- Flex Seal	Pulsafe
	- V-Maxx	Pulsafe
7.9	- Ultra Sonic	Uvex
	- Ultra Vision	Uvex
7.10	- LG10 Clear Vent	Pulsafe
	- LG20 Indirect Vent	Pulsafe
7.11	- Flip Up 4¼ x 2	Futuris
	- Shaded Panorama	Futuris
7.12	- 2" Round Flip Up	Futuris
	- 2" Cup	Futuris

Please note that weights and photographs are given as an indication only, they are subject to manufacturing tolerances and change without notice.

## Standards & Certification

EN166 is the safety eyewear Technical Performance Standard, it covers the properties of an eye protector such as Optical Class, Mechanical Strength and Fields of Use.

CE - Certifies only that the product and its manufacture has met the basic safety requirements under directive 89/686/EEC. The product must therefore be checked to ensure it has certification in the EN166 standard above for its required use.

**Products without legitimate certification may damage your health irreversibly**

All products in the catalogue are independently tested to meet their EN standards and copies of test certification are available on request

## Spectacles Glossary Of Terms & Standards

### TERMS

- Fog-Ban® - A coating for lenses to prevent misting.
- Hard-coat - An anti-scratch coating for lenses.
- I/O Silver - High performance lens for indoor/outdoor use to reduce artificial and sunlight glare
- IR Shade - For welding application: Shades 3 & 5 - oxy-cutting, gas welding
- Silver Mirror - For outdoor use when bright sunlight and glare can cause eye fatigue. Also meets the TSR requirements.
- TSR - Traffic Signal Recognition, for outdoor use when sunlight and glare can cause eye fatigue. Meets the requirements of colour Traffic Signal Recognition.

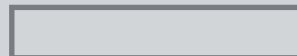
### STANDARDS

- EN166 - Technical Performance Standard
- EN167 - Methods for Optical Tests
- EN170 - Ultra violet filter
- EN175 - For welding and allied processes
- Class 1 - Optical class 1 = +/- 0.06 dioptres (permanent wear)
- Grade B & F - Impact Grade B = Medium energy impact / Impact Grade F = Low energy impact

### LENSES

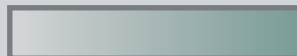
#### **Clear**

Application: For indoor use where eye protection is required against most commonly encountered hazards (i.e. impact protection).



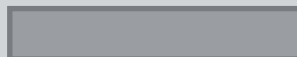
#### **I/O Silver**

Application: High performance lens for indoor/outdoor use to reduce artificial and sunlight glare



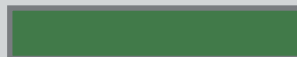
#### **TSR Grey**

Application: For outdoor use when sunlight and glare can cause eye fatigue. Meets the requirements of colour Traffic Signal Recognition.



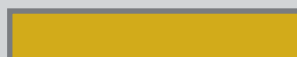
#### **Welding Glass Shade 5**

Application: For welding. Provides infrared protection. Not suitable for impact protection.



#### **Amber**

Application: To provide high visibility and good contrast in low light conditions.



# Fitlogic Spectacles

## Fitlogic

**PULSAFE**



Incorporates a revolutionary frame design with a soft, lightweight browbar that adjusts to your face shape.

In addition, a pioneering nosepiece design rotates, pivots and inclines providing face contouring comfort for all day wear.

**Award Winning**

**EN166**

**EN170**



Also available in Ready Reader + 1.5  
+ 2.0  
+ 2.5

Individual bifocal readers moulded directly into clear lens. Increases magnification for reading, inspection and fine detail work.

### Specifications

Lens	One Piece
Frame	Black Plastic
Weight	32g
Arms	Hinged Flexible
Nose Piece	Soft
Optical Clarity	Class 1

Code	Description	Pack	List
PUL1013337	Clear Lens	EA	5.65
PUL1014002	Ready Reader Lens +1.5	Clear EA	7.30
PUL1014005	Ready Reader Lens +2.0	Clear EA	7.30
PUL1014006	Ready Reader Lens +2.5	Clear EA	7.30

## Nemesis



The Nemesis offers a sleek and sporty looking safety spectacle covering a complete range of lens colours. Each delivers 99.9% protection from harmful UV rays, soft-touch temples for added comfort and offers unobstructed sight lines, so you can see what's coming at you. Its construction is extremely lightweight and offers a single wrap around lens and spectacle cord with every pair. The Nemesis is available in :-

- Clear
- Smoke Mirror
- Shade 3
- Shade 5
- Amber
- I/O



EN166

EN170



Specifications	
Lens	Two Piece
Frame	Black Plastic
Weight	27g
Arms	Hinged Flexible
Nose Piece	Soft
Optical Clarity	Class 1

Code	Description	Pack	List
JAC300035519805	Clear Lens	12	5.57
JAC300035519806	Smoke Mirror Lens	12	5.57
JAC300035519807	I/O Lens	12	5.57
JAC300035519809	Amber Lens	12	5.57
JAC300476219859	Shade 3 Lens	12	6.99
JAC300476119860	Shade 5 Lens	12	6.99

# Metalite & A800 Spectacles

## Metalite

**PULSAFE**



Fashionable and stylish, metal frame, sunglasses style that still delivers total eye protection and wearer comfort.

The lightweight design and advanced comfort features - spring hinged flexible temples and soft nose bridge - make Metalite exceptionally comfortable to wear for long periods on all face shapes.

EN166

EN170



Specifications	
Lens	Two Piece
Frame	Black Metal
Weight	33g
Arms	Spring Hinged
Nose Piece	Soft
Optical Clarity	Class 1

Code	Description	Pack	List
PUL1014290	Clear Lens	10	5.65
PUL1014293	TSR Grey Lens	10	6.55
PUL1014295	Gold Mirror Lens	10	6.55

## A800

**PULSAFE**



Affordable, sporty styling. The A800's comfortable yet slim profile provides an ideal fit for smaller faces. The 9-base polycarbonate abrasion resistant lenses provide 180° field of distortion free vision.

EN166

EN170



Specifications	
Lens	One Piece
Frame	Black Plastic
Weight	22g
Arms	Hinged Flexible
Nose Piece	Soft
Optical Clarity	Class 1

Code	Description	Pack	List
PUL1015368	TSR Grey Lens	10	3.61
PUL1015370	Clear Lens	10	3.04

# Protégé & Op-Tema Spectacle

## Protégé

**PULSAFE**



Designed with Pulsafe's proprietary Floating Lens technology, an expandable wrap-around brow, soft temple tip pads and moulded rubber nose pads, the Pulsafe Protégé provides workers with exceptional comfort and flexible style.

EN166

EN170



Specifications	
Lens	One Piece
Frame	Black Plastic
Weight	27g
Arms	Hinged Flexible
Nose Piece	Soft
Optical Clarity	Class 1

Code	Description	Pack	List
PUL1015363	TSR Grey Lens	10	4.25
PUL1015366	Clear Lens	10	3.95
PUL1015689	I/O Silver Lens	10	5.25

## Op-Tema

**PULSAFE**



Affordably priced protection for maximum value. Lightweight, full view lens with moulded brow bar. Soft adjustable nosepiece together with adjustable temple length and lens angle give an affordable comfort. Also comes with flexicord retainer for added security.

EN166

EN170



Specifications	
Lens	One Piece
Frame	Blue Plastic
Weight	28g
Arms	Hinged Flexible
Nose Piece	Soft
Optical Clarity	Class 1

Code	Description	Pack	List
PUL1000018	Clear Lens	10	3.04
PUL1000017	TSR Grey Lens	10	3.61

Protégé & Op-Tema Spectacle

# Element & Coloured Safety Spectacles

## Element



This economical lightweight design offers sleek appearance with unusual nosebridge comfort and fit. With 9.5 base curve and UV protection.

EN166

EN170



Specifications	
Lens	One Piece
Frame	Black Plastic
Weight	21g
Arms	Hinged
Nose Piece	Soft
Optical Clarity	Class 1

Code	Description	Pack	List
JAC300488031005	Clear Lens	12	1.50
JAC300488031006	Smoked Lens	12	1.50

## Coloured Safety Spectacle



This coloured safety spectacle has a one piece lens which is scratch and impact resistant with a moulded nose bridge. The frame has four position adjustable arms.

EN166



Specifications	
Lens	One Piece
Frame	Plastic
Weight	34g
Arms	Hinged

Code	Description	Pack	List
060118	Coloured Safety	12	3.30

# Classic & Comfort Spectacle

## Classic

# 3M



The Classic's lightweight design includes an integral browguard and side shield which provides the wearer high levels of comfort together with reliable protection. This spectacle also provides protection against UV radiation.

**Anti-Mist**

**EN166**

**EN170**



Specifications	
Lens	One Piece
Frame	Blue Plastic
Weight	24g
Arms	Hinged
Nose Piece	Soft
Optical Clarity	Class 1

Code	Description	Pack	List
3M2720	Clear Lens	10	3.95
3M2721	Smoked Lens	10	3.95

## Comfort

# 3M



The Comfort combines a modern design with various adjustment options leading to increased comfort and protection. Temple pivots enable the wearer to adjust the lens angle providing superior comfort, fit and vision clarity. Its polycarbonate lens is Anti-scratch, Anti-mist and provides UV protection.

**Anti-Mist**

**EN166**

**EN170**



Specifications	
Lens	One Piece
Frame	Blue Plastic
Weight	28g
Arms	Hinged Flexible
Nose Piece	Soft
Optical Clarity	Class 1

Code	Description	Pack	List
3M2740	Clear Lens	10	5.40

**Comfort & Classic Spectacle**

# Overspex & Safety Goggle

## Overspex

**FUTURIS**



Cover Spectacles - Clear, wrap around protection with one piece polycarbonate lens.



**EN166**



Specifications	
Lens	One Piece
Frame	Plastic
Weight	45g
Arms	Hinged
Optical Clarity	Class 1

Code	Description	Pack	List
060108	Green Anti-Glare	12	3.77
060112	Clear Lens	12	3.77

## Safety Goggle

**3M**



The wraparound design gives increased wearer confidence. The lens is Anti-scratch and Anti-fog and provides UV protection. The broad fully adjustable headband provides a snug fit and reliable protection.

**EN166**



Specifications	
Lens	One Piece
Frame	Moulded
Weight	98g
Nose Piece	Soft
Impact Grade	B
Optical Clarity	Class 1

Code	Description	Pack	List
3M2790A	Safety Goggle	10	7.75

# Flex Seal & V-Maxx Goggle

## Flex Seal

**PULSAFE**



The first industrial goggle on the market constructed with a silicone body for individual perfect fit, the difference is obvious from the very first fitting.

**Anti-Mist**

**EN166**

**EN175**



Specifications	
Lens	One Piece
Frame	Moulded
Weight	108g
Nose Piece	Soft
Impact Grade	B
Optical Clarity	Class 1

Code	Description	Pack	List
PUL1011333	Clear Lens	EA	8.19
PUL1011383	Shade 3 Lens	EA	11.90
PUL1011384	Shade 5 Lens	EA	11.90

## V-Maxx

**PULSAFE**



A sporty style for increased wearer acceptance. 180° field of vision for distortion free peripheral vision, can be worn over prescription eyewear and with half mask respirators.

**Anti-Mist**

**EN166**

**EN175**



Specifications	
Lens	One Piece
Frame	Moulded
Weight	98g
Nose Piece	Soft
Impact Grade	B
Optical Clarity	Class 1

Code	Description	Pack	List
PUL1006193	Clear Lens	10	4.12
PUL1008110	Shade 3 Lens	10	7.31
PUL1008111	Shade 5 Lens	10	7.31

**Flex Seal & V-Maxx Goggle**

# Ultra Sonic & Ultra Vision Goggles

## Ultra Sonic

**uvex**  
PROTECTING PEOPLE



This Ultra Sonic goggle has Anti-mist, Anti-static scratch resistant lenses which provide unrestricted peripheral vision. These are the lightest Uvex goggles (80g) and provide the wearer with exceptional comfort and outstanding ventilation control. These goggles are available with an orange or grey frame and can be worn over prescription spectacles.

EN166



Specifications	
Lens	One Piece
Frame	Moulded
Weight	80g
Nose Piece	Soft
Impact Grade	B
Optical Clarity	Class 1

Code	Description	Pack	List
UVEX9302-645	Ultra Sonic Orange Frame	4	8.10
UVEX9302-685	Ultra Sonic Grey Frame	4	8.10

## Ultra Vision

**uvex**  
PROTECTING PEOPLE



The Ultra Vision Goggle sets the benchmark for comfort, field of vision and fit, even when prescription spectacles are worn. It has Anti-mist, Anti-static, scratch resistant lens with a wide easily adjustable headband. The goggles are available in clear or Shade 5. The Shade 5 Welding Goggle has a polycarbonate welding lens which minimizes damage by welding sparks.

Top Selling

EN166

EN175



Specifications	
Lens	One Piece
Frame	Moulded
Weight	134g
Nose Piece	Soft
Impact Grade	B
Optical Clarity	Class 1

Code	Description	Pack	List
UVEX9301-045	Ultra Vision Shade 5	EA	8.70
UVEX9301-625	Ultra Vision Supravision Lens	EA	7.40

# LG10 & LG20 Goggle

## LG10

**PULSAFE**



The impact-resistant polycarbonate lens provides excellent protection against flying particles, coarse dusts, liquid droplets, mists and sprays. The goggles lightweight design makes it a very comfortable fit for the wearer.

EN166

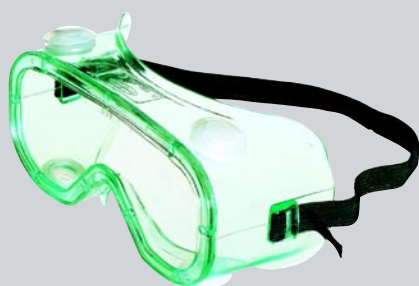


Specifications	
Lens	One Piece
Frame	Moulded
Weight	79g
Nose Piece	Soft
Impact Grade	B
Optical Clarity	Class 1

Code	Description	Pack	List
PUL1005504	LG10 Goggle Direct Vent Polycarbonate Lens	50	1.34

## LG20

**PULSAFE**



The LG20 provides Indirect ventilation and together with its lightweight design, extra soft flange and easily adjustable headband provides perfect comfort and wearer acceptance.

EN166



Specifications	
Lens	One Piece
Frame	Moulded
Weight	79g
Nose Piece	Soft
Impact Grade	B
Optical Clarity	Class 1

Code	Description	Pack	List
PUL1005507	LG20 Goggle Indirect Vent Polycarbonate Lens	50	1.51

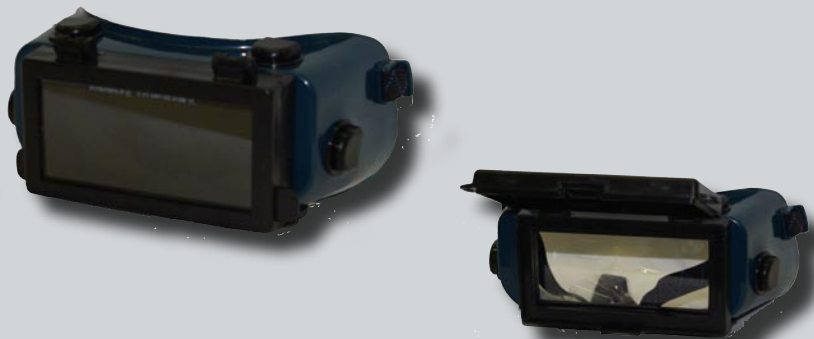
LG10 & LG20 Goggle

# Flip Up & Panorama Goggle

## Flip Up Goggle 4¼ x 2



This flip up goggle has a soft one piece moulded body with a wide panoramic viewing area and is approved to use for welding.



EN175



Specifications	
Lens	One Piece
Frame	Moulded
Weight	166g
Nose Piece	Soft
Impact Grade	F

Code	Description	Pack	List
060129	Flip-up 4¼ x 2	10	4.38

## Panorama



The Panorama goggle is super lightweight and flexible with impact resistant plastic lens and a soft PVC frame which adapts to any face shape.



EN175



Specifications	
Lens	One Piece
Frame	Moulded
Weight	53g
Nose Piece	Soft
Impact Grade	F

Code	Description	Pack	List
060125	Panorama Goggle Coloured Indirect Vent	20	1.90

Flip Up & Panorama Goggle

# 2" Round Flip Up & 2" Cup Goggle

## 2" Round Flip Up Goggle



This Flip Up Goggle is suitable for welding and can be fitted over prescription spectacles.



EN175



Specifications	
Lens	Two Piece
Frame	Moulded
Weight	122g
Nose Piece	Soft
Impact Grade	F

Code	Description	Pack	List
060122	2" Round Flip Up Goggle	12	4.50

## 2" Cup



This Goggle is suitable for gas welding.



EN175



Specifications	
Lens	Two Piece
Frame	Plastic
Weight	68g
Nose Piece	Soft
Impact Grade	F

Code	Description	Pack	List
060121	2" Round Cup Goggle	10	6.78

2" Round Flip Up & 2" Cup Goggle

PULSAFE

3M

FUTURIS

uvex



# Also Available

